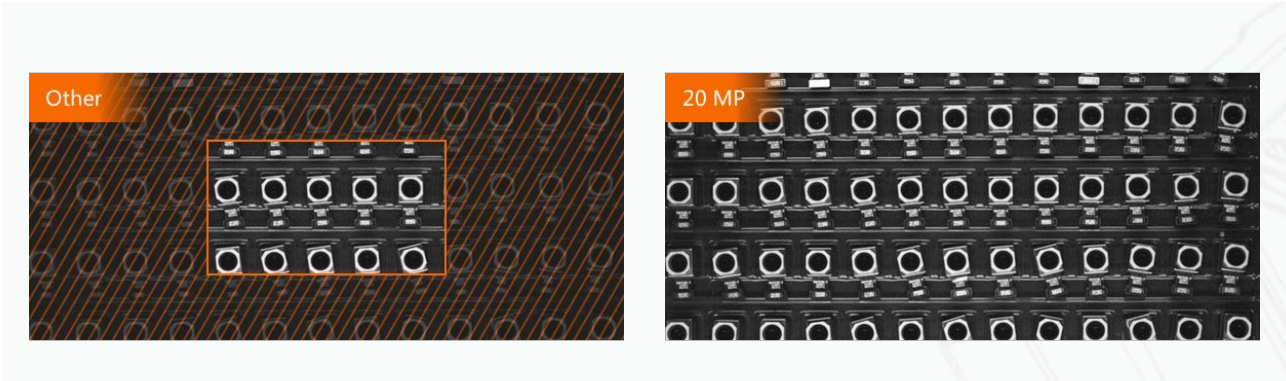


ID5000 Series Smart Code Reader

Based on multi-core deep learning processor, the full-featured code reader brings powerful code reading performance. Equipped with mechanical focus lens and various components, ID5000 can reach up to 20M pixels, suitable for various code reading applications.



- Multi-core Processing



- High Accuracy & Wide View

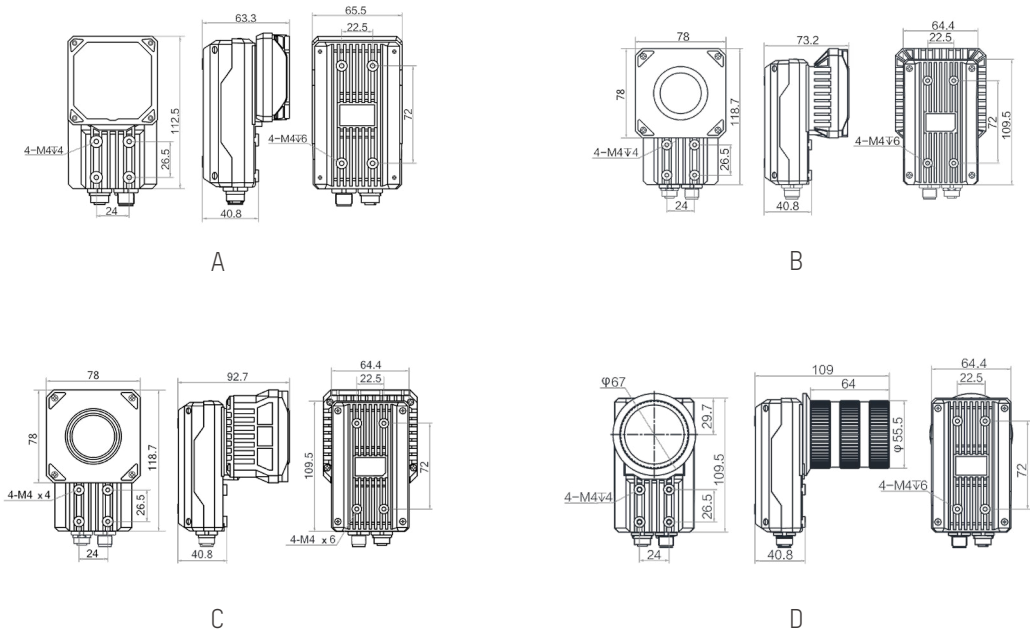
Specifications



Model	Resolution	Max. frame rate	Max. reading speed	Light source	Max. power consumption	Focal Length	Label
MV-ID5030M-xxS-WBN	2048 × 1536	60 fps	90 codes/sec	white, optional blue/red/infrared	60 W@24 VDC	8/12/16/25 mm	A
MV-ID5050M-xxS-WBN	2368 × 1760	40 fps	90 codes/sec	white, optional blue/red/infrared	60 W@24 VDC	8/12/16/25 mm	A
MV-ID5060M-xxS-WBN	3072 × 2048	30 fps	90 codes/sec	white, optional blue/red/infrared	20 W@24 VDC	8/12/16/25 mm	B
MV-ID5060M-00C-WBN	3072 × 2048	30 fps	90 codes/sec	white, optional blue/red/infrared	23 W@24 VDC	/	C
MV-ID5060M-00C-NNN	3072 × 2048	30 fps	90 codes/sec	/	23 W@24 VDC	/	D
MV-ID5120M-00C-NNN	4096 × 3072	28 fps	84 codes/sec	/	12 W@24 VDC	/	D
MV-ID5200M-00C-NNN	5440 × 3648	20 fps	36 codes/sec	/	12 W@24 VDC	/	D

Notice: xx products with different focal Lengths

Dimension



Unit:mm

Accessories



I/O Power Cables	Standard	High Softness
3m	MV-IDA-P-M12A12pF-open-ST-3m	--
5m	MV-IDA-P-M12A12pF-open-ST-5m	MV-ACP-M12A12pF(up)-open-ST-5mVPU
7m	MV-IDA-P-M12A12pF-open-ST-7m	--
10m	MV-IDA-P-M12A12pF-open-ST-10m	MV-IDA-P-M12A12pF-open-HF-10m
15m	MV-IDA-P-M12A12pF-open-ST-15m	--
20m	--	MV-IDA-P-M12A12pF-open-HF-20m
30m	MV-IDA-P-M12A12pF-open-ST-30m	--



Gigabit Network Cable	Standard	High Softness
3m	MV-IDA-E-M12A8pF-RJ45-ST-3m	--
5m	MV-IDA-E-M12A8pF-RJ45-ST-5m	MV-ACE-M12A8pMVPU
7m	MV-IDA-E-M12A8pF-RJ45-ST-7m	--
10m	MV-IDA-E-M12A8pF-RJ45-ST-10m	MV-IDA-E-M12A8pF-RJ45-HF-10m
15m	MV-IDA-E-M12A8pF-RJ45-ST-15m	--
20m	--	MV-IDA-E-M12A8pF-RJ45-HF-20m
30m	MV-IDA-E-M12A8pF-RJ45-ST-30m	--



Power Supply	Desktop Two Wire Adapter	Switching Power Supply
Model	KPL-060M-VI	LRS-50-24



Lens	ID5030/ID5050	ID5060	C-mount (install Lens Cap)	C-mount (not install Lens Cap)
8mm	BHYB0856-12S	BHC0856-05S	MVL-MF0828M-8MP	ALL
12mm	BHP1256-12S	BHC1256-05S	MVL-MF1228M-8MP	
16mm	BHP1656-12S	BHC1656-05S	MVL-MF1628M-8MP	
25mm	BHP2556-12S	BHC2556-05S	MVL-MF2528M-8MP	
35mm	--	--	MVL-MF3528M-8MP	
50mm	--	--	MVL-MF5028M-8MP	



Lens Cap	ID5030/ID5050	ID5060
Transparent	ID5030/ID5050 transparent lens cap	ID5060 transparent lens cap
Semi-polarization	ID5030/ID5050 Semi-polarization lens cap	--
Polarization	ID5030/ID5050 polarization lens cap	ID5060 polarization lens cap
Diffusion	ID5030/ID5050 diffusion lens cap	ID5060 diffusion lens cap



Light Source	ID5030/ID5050	ID5060
White	ID5030/ID5050 white light	ID5060 white light
Blue	ID5030/ID5050 blue light	ID5060 blue light
Red	ID5030/ID5050 red light	ID5060 red light
Near-infrared	ID5030/ID5050 near-infrared light	ID5060 near-infrared light



Mounting Component	Model
Standard	V024-Mounting Component